

Description of a New *Coleophora* Moth and Note on a Synonym (Lep.).

By WILLIAM WILD, East Aurora, N. Y.

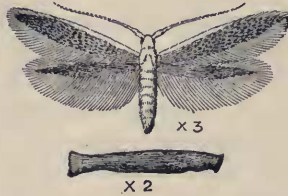
Coleophora albiantennaella n. sp.

Expanse 12 to 13 mm.

Head, palpi, antennae and thorax, pale ochreous-white; palpi slightly tufted; antennae not annulated, basal joint thickened; legs pale ochreous-white.

Forewings: coarsely covered with grayish-brown scales, becoming darker in apical third. A broad white streak extending along costal margin from base to cilia. Cilia light gray.

Hindwings: very light grayish-brown, cilia concolorous.



Coleophora albiantennaella and larval case.

Locality: Buffalo, New York. *Cotypes*, two, in my collection, but they may eventually be placed in the United States National Museum.

Two specimens bred from larvae feeding on the under side of leaves of dogwood. Larvae taken June 12th. Imagos issued July 20th and 30th.

Larva: length 5 mm. Cylindrical, reddish-brown. Head black. Prothoracic and mesothoracic shields black, divided by a light dorsal line; a lateral black spot on each thoracic segment. Thoracic legs black. Anal plate black.

Case: length 11 mm. Grayish-brown, cigar-shaped, a trifle compressed laterally. Mouth opening oblique, slightly flared. Posterior end dilated, flattened and square-ending.

Coleophora auropurpuriella Cham.

C. auropurpuriella Cham. is a synonym of *C. corruscipennella* Clem. according to Chambers' own correction in the Can. Ent., VII, 124, 1875, which has been overlooked in Dr. Dyar's list and in Smith's list, probably on account of not being included in the index of this volume.